

Furnished Short Term Rental

2202 NW 60th St Seattle, WA 98107



This delightful retreat is located on the main floor of a turn-of-the-century house in historic old Ballard. Ballard has everything you could want, and living here it's all at your doorstep. Within a 6 block radius you can enjoy an upscale movie house, a diverse array of restaurants, shops and the fabulous year-round Sunday Farmer's Market offering fresh locally grown produce and products. If your visit is job-related, you will also have access to a post office, FedEx Kinko's and newly built-green public library.

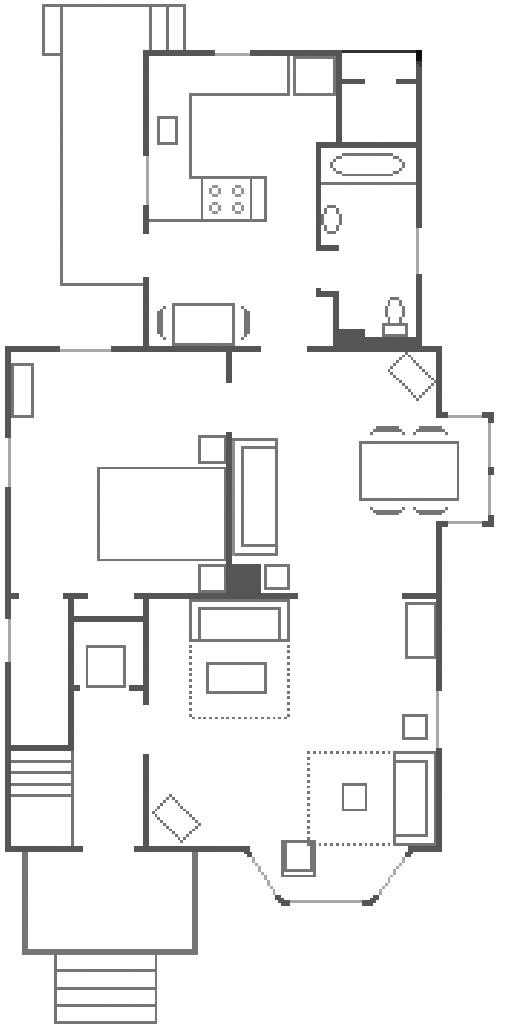
This home has been completely renovated in keeping with its original character. Wide-plank oak floors extend throughout, including the new kitchen. The kitchen is cook-friendly and there is an herb garden for your enjoyment. Guests can chat with the chef while sitting at the breakfast table. The main dining room can seat six and there is still room for a sofa and TV. Barn doors separate the dining room from the very spacious living room. It can be closed off for privacy and has two queen sized high end, no-bar hide-a-beds and a 26 inch LCD TV. There is another queen sized sleigh bed in the private bedroom, with lots of drawer space and ample storage.

Bedrooms: One+... sleeps 6!	Rental Amount: \$2,100 Oct-May, \$2,600 Jun-Sep
Bathrooms: One	Minimum Stay: One month
Total Sq Ft: 900 apx	Utilities Included: Heat, lights, cable, internet... all!

**For more information, contact
Bob and Mary Melvey
206.650.7880**

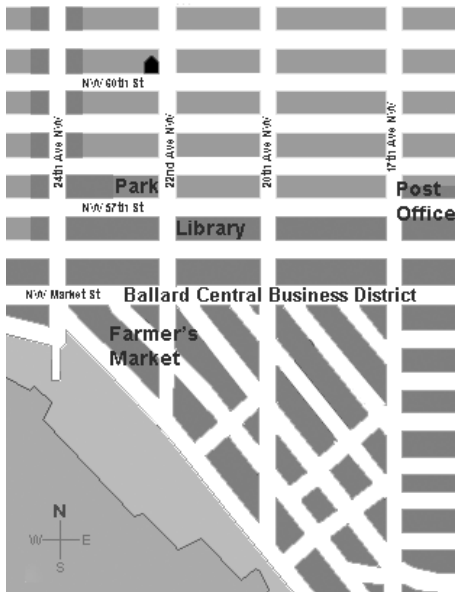
Furnished Short Term Rental

2202 NW 60th St: \$2,100 - \$2,600/mo



Special Features of This Home Include:

- New front loading washer and dryer.
- Whisper quiet forced air hydronic heating system.
- New kitchen with Calcutta marble counter-tops and brand new appliances including refrigerator, dishwasher and gas range. New utensils and cookware.
- Breakfast table in kitchen.
- Spacious dining room with bay window seats six and has sofa and TV.
- Living room with two high end, no-bar hide-a-beds and 26 inc LCD TV. Barn doors sequester the space for privacy.
- Private bedroom with queen sized cherry sleigh bed with matching end-tables and dresser. Lots of hanging closet space.
- New bathroom with hex tile floor and subway tile tub surround.
- Fully insulated, with opening storm windows keeps this home cozy and quiet.
- All utilities paid for including heat, hot water, lights, cable, high-speed WiFi internet and land-line telephone.



**For more information, contact
Bob and Mary Melvey
206.650.7880**

**bob@melvey.com
mary@melvey.com**